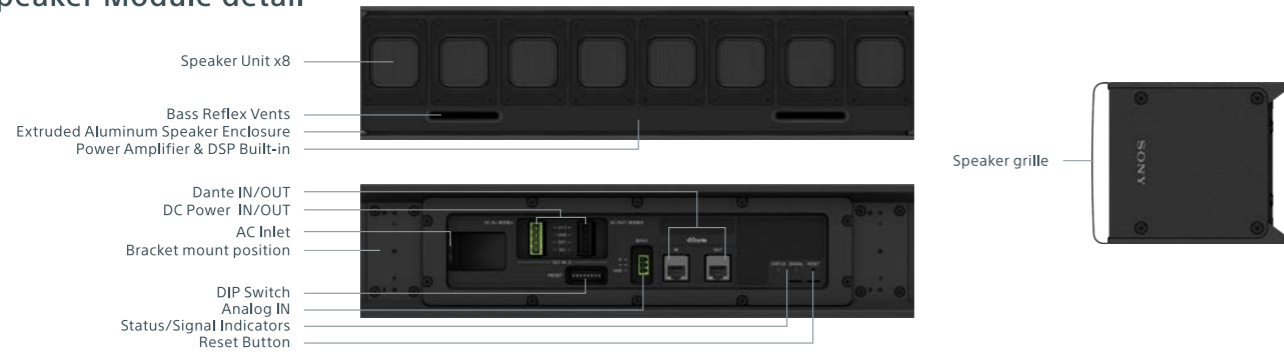
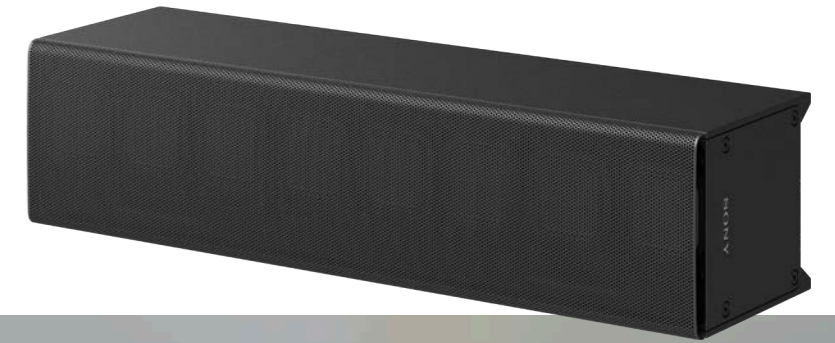


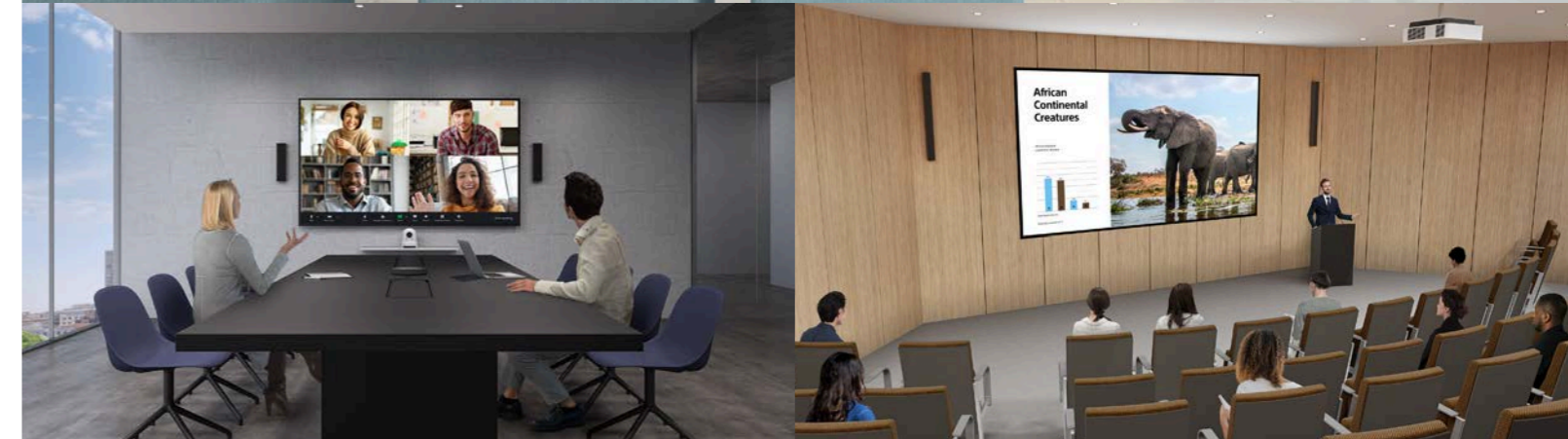
Speaker Module detail



Powered Line-Array Speaker
SLS-1A



(System)	Powered Line-Array Speaker	SLS-1A					
	Module	(1module)	(2module)	(3module)	(4module)	(5module)	(6module)
	Frequency Range *Frequency characteristic measured at anechoic chamber	80Hz-20kHz					
	Horizontal Dispersion *1-4k average, -6dB *At Vertical style (Vertical Dispersion at Horizontal style)	200degrees					
	Vertical Opening Angles *At Vertical style (Vertical Opening Angles at Horizontal style)	Software Adjustable: Max 40degrees	Software Adjustable: Max 50degrees	Software Adjustable: Max 60degrees	Software Adjustable: Max 70degrees	Software Adjustable: Max 80degrees	Software Adjustable: Max 90degrees
	Vertical Beam Steering Angles *At Vertical style (Horizontal Beam Steering at Horizontal style)	20degrees	20degrees	30degrees	30degrees	40degrees	40degrees
	Maximum SPL (1m) *Max SPL calculated based on free-field sensitivity, and without beam steering, spreading applied.	105dB (peak 112dB)	111dB (peak 118dB)	115dB (peak 122dB)	117dB (peak 124dB)	119dB (peak 126dB)	121dB (peak 128dB)
	Peak SPL (30m) *Assumption signal loss at 30m and 15dB	97dB	103dB	107dB	109dB	111dB	113dB
	Typical Usable Throw Distance *Typical Maximum Usable Throw Distance includes considerations for reverberation and speech intelligibility.	4m	8m	12m	16m	20m	25m
	Low-frequency Beam Control Limit	1.25kHz	630Hz	400Hz	315Hz	250Hz	200Hz
	Enclosure type	Bass reflex type					
	Driver	Flat and Square speaker unit, 35mm x 35mm (1 7/16 in x 1 7/16 in) Full range x 8					
	Magnetic shielding	No					
	Dust and water resistant	No					
(System)	Amplifier Channels / Rated Power	Power Output (rated) 10W x 8channels (at 6ohms, 1kHz, 1% THD)					
	Amplifier type	Class-D					
	Protection circuit	Speaker Processing: Clipping limit Amplifier: Terminal shutdown/Overheat protection/Over voltage protection/Under voltage lock out/DC protection Power: Overload protection/Overheat protection					
(Electric performance)	Power (AC) Voltage	Universal AC 100V - 240V, 50Hz/60Hz					
	Power (AC) Connector	IEC60320-C7					
	Power Consumption	87W/Standby 7W (Dante IN or Dante OUT: 1port), 8W (Dante IN and Dante OUT: 2ports)					
(Input/Output)	Analog Audio Input	Euro type terminal block (Pitch 3.81mm, 3-pin, Green)					
	Analog Audio Maximum Input Level (4stages)	Balance connection: +8.2dBu (2Vrms) / +12dBu/+18dBu/+24dBu Unbalance connection: +8.2dBu(2Vrms)/+12dBu/+18dBu					
	Input Sensitivity (4stages)	Balance connection: +8.2dBu (2Vrms) / +12dBu/+18dBu/+24dBu Unbalance connection: +8.2dBu(2Vrms)/+12dBu/+18dBu					
	Input Impedance	Balance connection: 94kΩ / Unbalance connection: 47kΩ					
	Digital Audio Inputs	1-channel of Dante digital audio network (RJ-45) *8-channel of Dante digital audio network (RJ-45) is possible					
	Digital Audio Outputs	1-channel of Dante digital audio network (RJ-45) *8-channel of Dante digital audio network (RJ-45) is possible					
	Power (DC) Input/Output	Euro type terminal block (Pitch 5.08mm, 4-pin, Black/Green)					
	DIP Switch	Select preset beam setting and Dante® input channel (1ch/8ch)					
(Integrated DSP)	A/D and D/A Converters	24-bit, 96kHz					
	FIR Filter Support	1024tap @ 96kHz					
	Audio Latency	13mS					
(Physical specification)	Enclosure	Cabinet: Extruded aluminum (powder coated)		Side/Back panel: Plastic			
	Grille	Punching metal steel plate (Painted)					
	Indicators	Status, Signal, LAN					
	Operating Temperature Range (Ambient)	0°C - 40°C					
	Cooling System	Cooling is passive only					
	Environmental	Indoor only					
	Install	Integrated speaker brackets; allows horizontal yaw to 0-degree or 10-degree direction					
	Dimensions (w×h×d) (approx.)	384mm x 92mm x 100mm (15 1/8 in x 3 5/8 in x 4 in) (without speaker grille) 384mm x 92mm x 110mm (15 1/8 in x 3 5/8 in x 4 3/8 in) (with speaker grille)					
	Mass (approx.)	4kg (8lb 14 oz) (with speaker grille)					
	Power (DC) Input/Output	Euro type terminal block (Pitch 5.08mm, 4-pin, Black/Green)					
	Included Accessories	Speaker grille (attached to the speaker) (1), Power cord (1), Power cascade cable (Euro type terminal block) (1), Ethernet cable for audio signal cascade (RJ-45) (1), 3-pin Euro type terminal block header (1), Speaker bracket(no slant) (2), Speaker bracket (10-degree slant) (2), Speaker joint bracket (no slant) (1), Speaker joint bracket (10-degree slant) (1), Wall mounting bracket (1), Metal joint fitting for wall mounting brackets (1), Detachment stopper (2), Metal joint fitting for attaching a safety wire (2), Cable clamp (2), Spacer pad A (2), Spacer pad B (1), 4x10 screw with washer (9), Shoulder screw (2), Operating Instructions (this manual) (1), Reference Guide (1), Warranty card (1)					



For full features visit

<https://pro.sony/products/professional-speakers/SLS-1A>

© 2022 Sony Corporation. All rights reserved. Reproduction in whole or in part without permission is prohibited. Features and specifications are subject to change without notice. All non-metric weights and measurements are approximate. "Sony" is registered trademarks or trademarks of Sony Corporation. All other trademarks are the property of their respective owners.

Distributed by

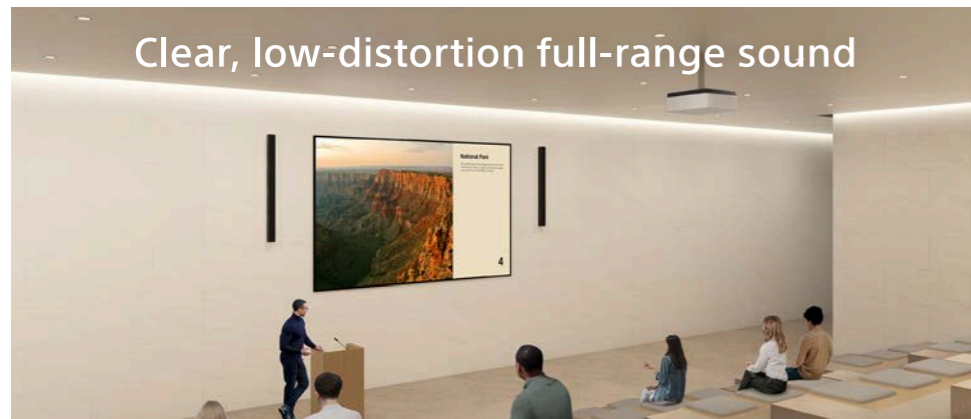


SLS-1A

Powered Line-Array Speaker

delivers spectacular sound with fine beam control and flexible installation

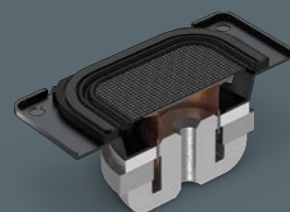
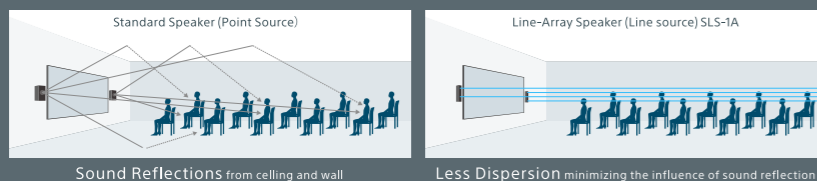
Give every audience member a rich, powerful sound experience in corporate and educational environments. The SLS-1A is a compact, uniquely versatile line-array speaker system that offers an ideal audio reinforcement solution with large displays and projectors.



Clear, low-distortion full-range sound

Better sound in any room

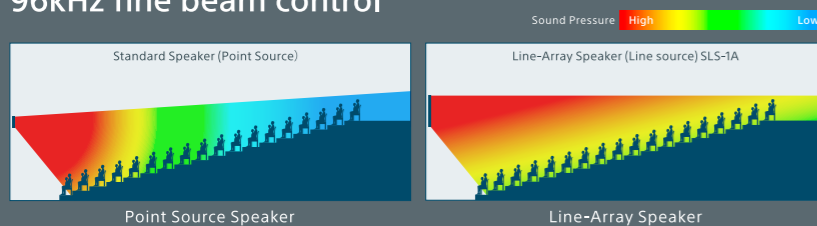
Unlike standard speakers, the line array design of the SLS-1A minimises sound reflections from ceilings, walls and floors. Audiences can enjoy uniform, clearly directed sound with less attenuation over long distances, independent of room size or shape.



Magnetic fluid speaker

Original Sony technology eliminates voice coil damper found in standard speakers, reducing distortion for clearer sound.

96kHz fine beam control



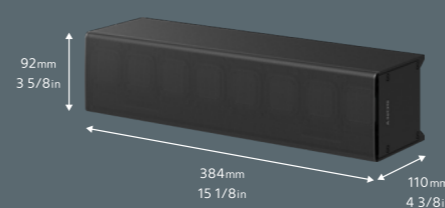
The finely-controlled beam for sound area creation and pressure adjustment is also particularly suited to providing even sound coverage in venues. Not affected by the shape of rooms, ideal sound can be delivered.



Compact size, flexible installation

Compact yet powerful

Rigid aluminium body measuring just 92 x 384 x 110* mm houses speakers and amplification, delivering high sound pressure levels from a compact unit.
* 100mm without speaker grille

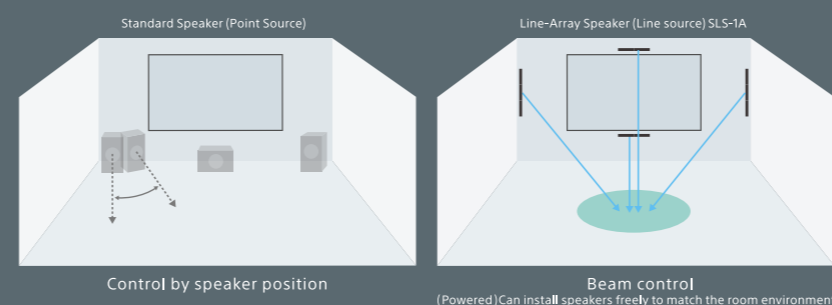


Flexible mounting and expansion options



Mount horizontally or vertically. Easily link multiple units for larger scale sound installations.

Flexible beam setting

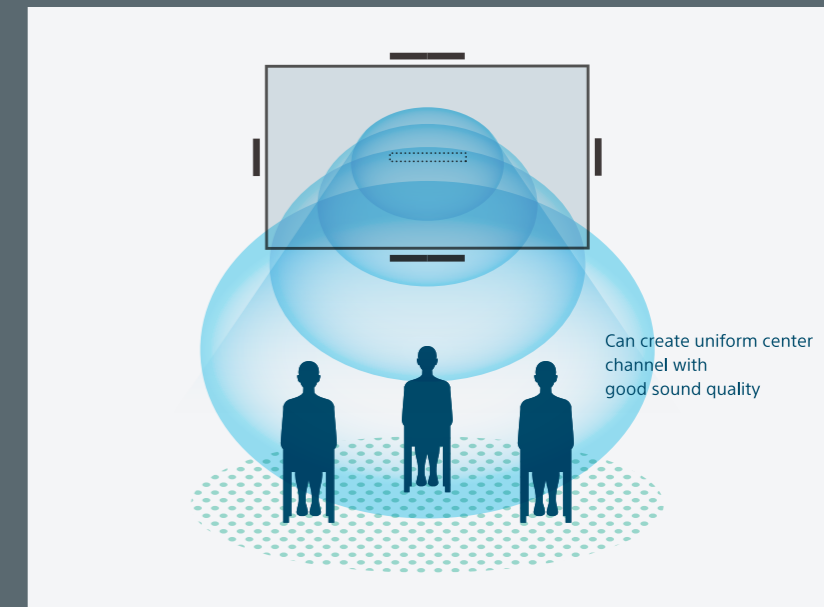


Adjust sound settings using hardware switches, third party EASE® Focus software or Sony's PC application "Line-Array Speaker Manager" that controls beam steering, spread.

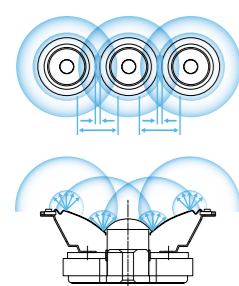


On-screen centre sound localisation

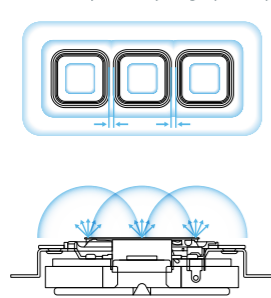
The SLS-1A is an ideal sound reinforcement partner for large flat-panel displays and projectors. In contrast with normal point-source speakers, the SLS-1A offers a large 'sweet spot' that can be accurately controlled for clear, consistent sound over a wide listening area in any venue – from corporate showrooms, entrance lobbies and retail spaces to lecture theatres and auditoriums. The finely-controlled beam is also particularly suited to providing even sound coverage in venues like auditoriums with a raked floor.



Standard circle type diaphragm /Standard concave shape



Flat and Square Diaphragm(SLS-1A)



Sony's Unique Technology: Flat and square Diaphragm provides ideal point source with reduced inter-modulation distortion.



The SLS-1A supports Dante® digital audio network to simplify wiring in large-scale AV installations



Ease® Focus 3

Sound design simulation for sound pressure optimization by "EASE® Focus" software



Line-Array Speaker Manager

Easy steering/spread setting by Sony's Line-Array Speaker Manager



Hardware DIP Switch

Simple preset menu for setting spread & steering on hardware switch (6patterns)

*Dante® is a registered trademark of Audinate Pty Ltd.
*EASE® Focus is a registered trademark of AFMG Technologies GmbH